

Demographic and Income Profile

Prentiss County, MS (28117)
Prentiss
Geography: County

Prepared by Esri

Summary	Census 2010	Census 2020	2024	2029
Population	25,276	25,008	24,755	24,507
Households	9,812	9,616	9,521	9,418
Families	6,915	6,461	6,368	6,283
Average Household Size	2.49	2.46	2.46	2.46
Owner Occupied Housing Units	7,296	6,942	7,132	7,119
Renter Occupied Housing Units	2,516	2,674	2,389	2,299
Median Age	38.4	39.0	39.4	40.1

Trends: 2024-2029 Annual Rate	Area	State	National
Population	-0.20%	-0.10%	0.38%
Households	-0.22%	0.24%	0.64%
Families	-0.27%	0.20%	0.56%
Owner HHs	-0.04%	0.64%	0.97%
Median Household Income	2.12%	2.57%	2.95%

Households by Income	2024		2029	
	Number	Percent	Number	Percent
<\$15,000	1,471	15.5%	1,245	13.2%
\$15,000 - \$24,999	850	8.9%	729	7.7%
\$25,000 - \$34,999	774	8.1%	689	7.3%
\$35,000 - \$49,999	1,545	16.2%	1,448	15.4%
\$50,000 - \$74,999	1,675	17.6%	1,660	17.6%
\$75,000 - \$99,999	1,299	13.6%	1,402	14.9%
\$100,000 - \$149,999	1,237	13.0%	1,440	15.3%
\$150,000 - \$199,999	275	2.9%	333	3.5%
\$200,000+	395	4.1%	472	5.0%

Median Household Income	\$51,220	\$56,897
Average Household Income	\$71,246	\$81,175
Per Capita Income	\$27,513	\$31,307

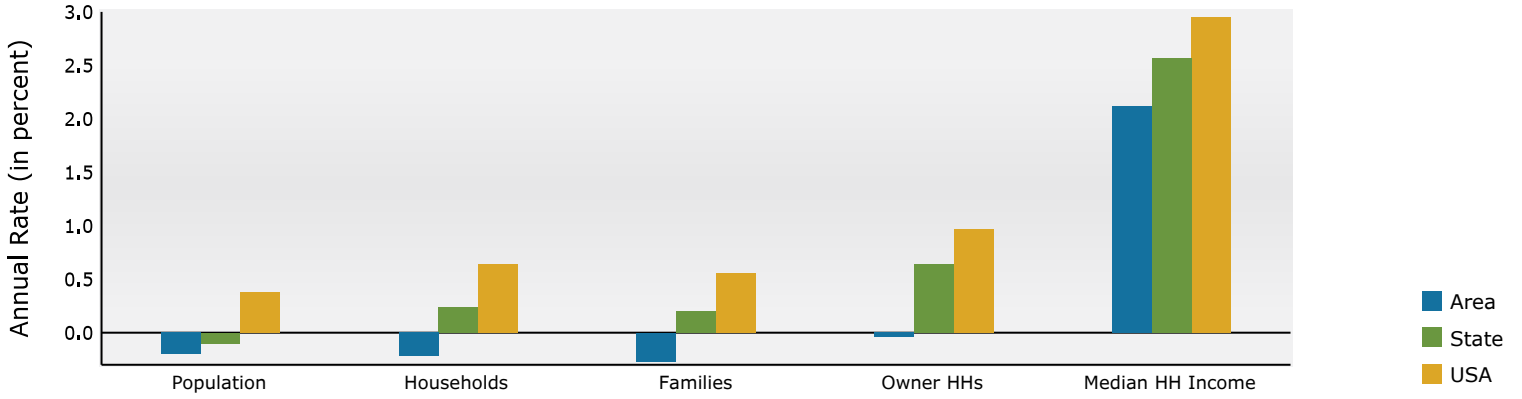
Population by Age	Census 2010		Census 2020		2024		2029	
	Number	Percent	Number	Percent	Number	Percent	Number	Percent
0 - 4	1,638	6.5%	1,415	5.7%	1,364	5.5%	1,353	5.5%
5 - 9	1,586	6.3%	1,526	6.1%	1,499	6.1%	1,343	5.5%
10 - 14	1,613	6.4%	1,644	6.6%	1,547	6.2%	1,477	6.0%
15 - 19	1,967	7.8%	2,249	9.0%	2,167	8.8%	2,037	8.3%
20 - 24	1,907	7.5%	1,754	7.0%	1,760	7.1%	1,656	6.8%
25 - 34	2,905	11.5%	2,824	11.3%	2,811	11.4%	2,940	12.0%
35 - 44	3,174	12.6%	2,786	11.1%	2,821	11.4%	2,848	11.6%
45 - 54	3,471	13.7%	3,161	12.6%	2,976	12.0%	2,853	11.6%
55 - 64	3,043	12.0%	3,256	13.0%	3,180	12.8%	2,996	12.2%
65 - 74	2,229	8.8%	2,534	10.1%	2,625	10.6%	2,795	11.4%
75 - 84	1,223	4.8%	1,412	5.6%	1,518	6.1%	1,664	6.8%
85+	520	2.1%	447	1.8%	487	2.0%	545	2.2%

Race and Ethnicity	Census 2010		Census 2020		2024		2029	
	Number	Percent	Number	Percent	Number	Percent	Number	Percent
White Alone	21,312	84.3%	20,303	81.2%	19,914	80.4%	19,457	79.4%
Black Alone	3,488	13.8%	3,570	14.3%	3,608	14.6%	3,733	15.2%
American Indian Alone	44	0.2%	67	0.3%	68	0.3%	69	0.3%
Asian Alone	33	0.1%	85	0.3%	130	0.5%	146	0.6%
Pacific Islander Alone	3	0.0%	5	0.0%	1	0.0%	1	0.0%
Some Other Race Alone	135	0.5%	188	0.8%	188	0.8%	196	0.8%
Two or More Races	261	1.0%	790	3.2%	846	3.4%	905	3.7%
Hispanic Origin (Any Race)	307	1.2%	405	1.6%	398	1.6%	416	1.7%

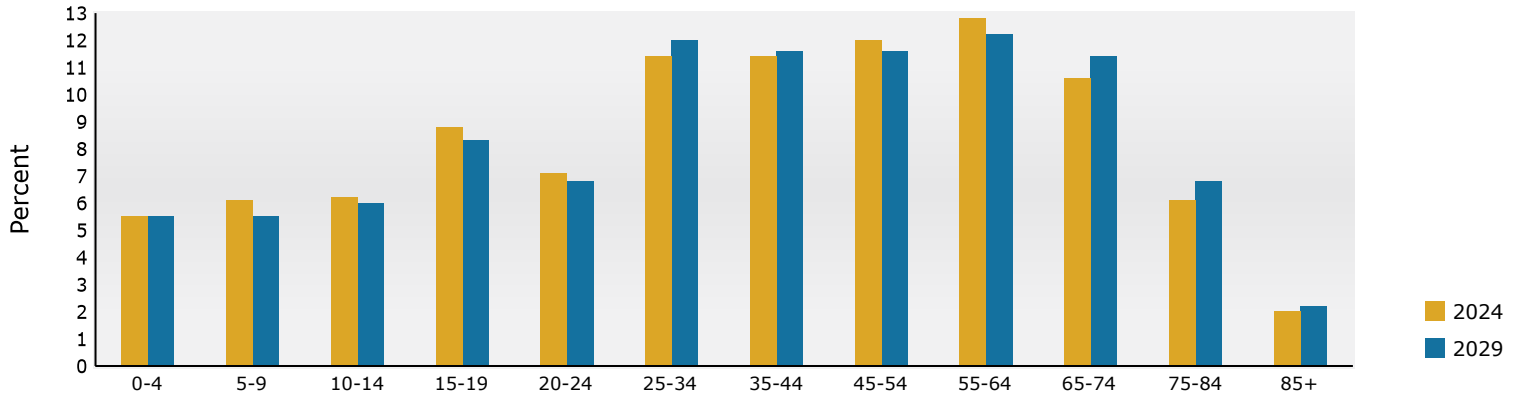
Data Note: Income is expressed in current dollars.

Source: Esri forecasts for 2024 and 2029. U.S. Census Bureau 2020 decennial Census in 2020 geographies.

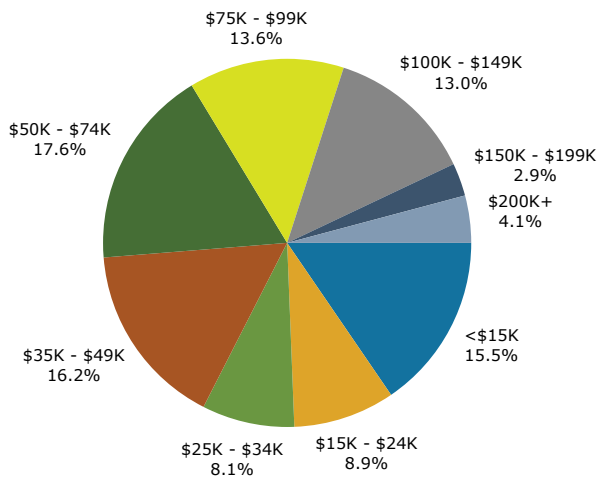
Trends 2024-2029



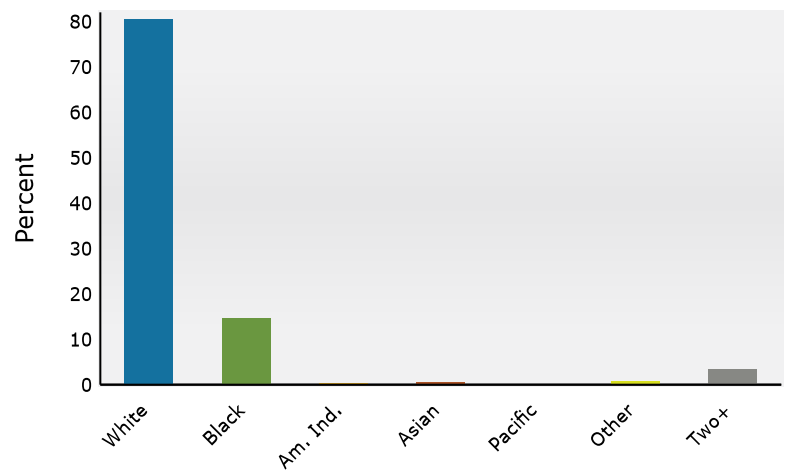
Population by Age



2024 Household Income



2024 Population by Race



2024 Percent Hispanic Origin: 1.6%

Source: Esri forecasts for 2024 and 2029. U.S. Census Bureau 2020 decennial Census in 2020 geographies.