

## **Booneville Site B**

**PRENTISS COUNTY**  
DEVELOPMENT ASSOCIATION

15 Acres

Privately Owned

\$8,000/acre

### **Site Summary**



**PCDA has Purchase Option**

**3 miles to US Hwy 45 (4-lane)**

**Water: 8"**

**Sewer: 8"**

**Fiber On-site**

**3 Phase Power On-site**

**½ mile from two electrical substations**

**Gas: 4" Main adjacent**

**1,500 ft to Kansas City Southern Rail**

**19 miles to Hwy 72 (4-lane)**

**32 miles to I-22 (4-lane)**

**36 miles to Yellow Creek Inland Port**

**52 miles to Port of Itawamba**

**100 miles to Memphis International Airport (MEM)**

**38 miles to Tupelo Regional Airport (TUP)**

### **Studies Completed**

**Topographical Survey  
Phase I**

**Cultural Resources**

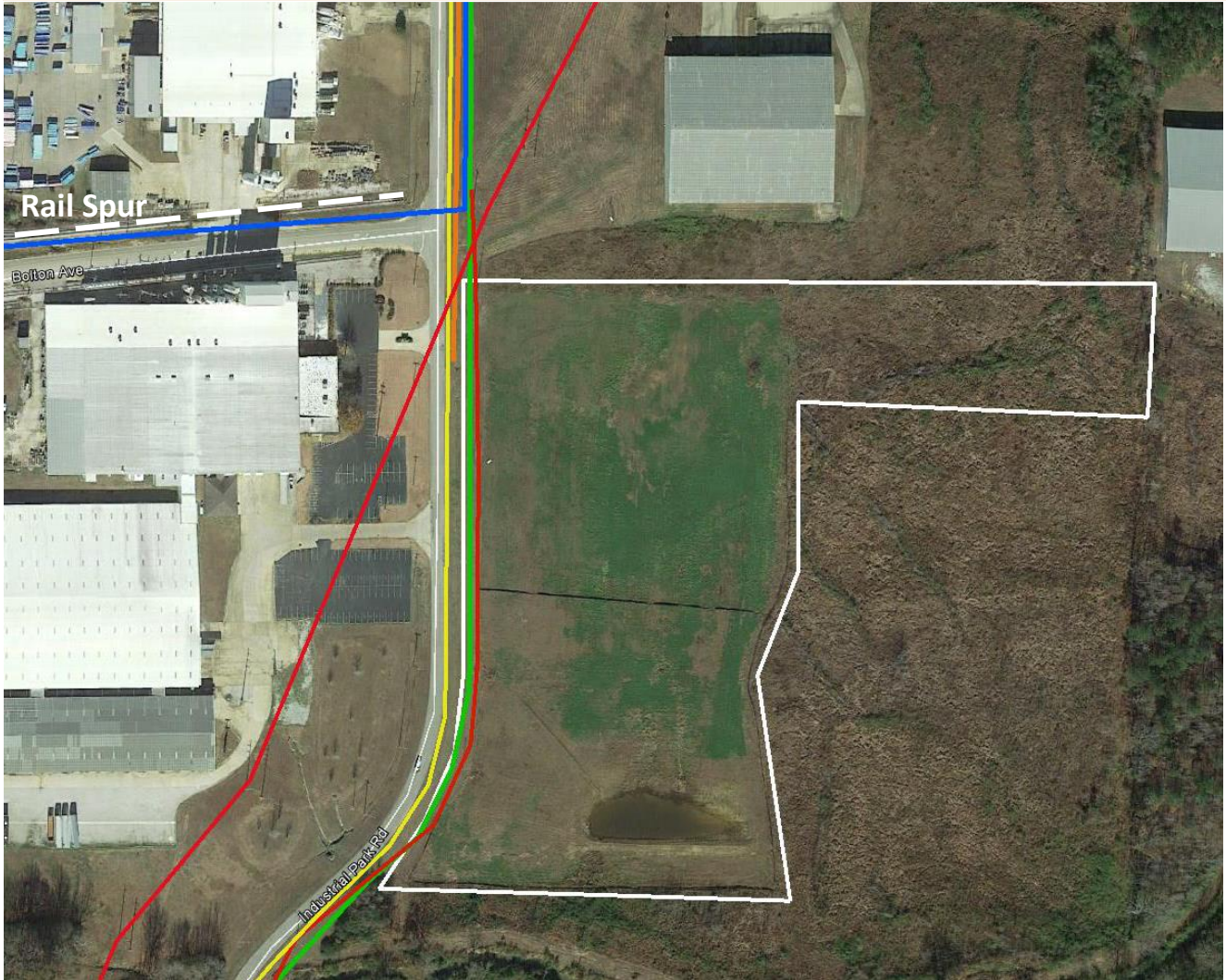
**Wetlands Delineation**

**Soil Subsurface Report**

# Booneville Site B

15 Acres

Aerial with Utilities Identified



Site outline



6 inch Water line



3-Phase Electric Power



12 inch Sewer



2 inch Natural Gas



Fiber